



Rijkswaterstaat
Ministerie van Infrastructuur
en Waterstaat



Widening and deepening of
the A9 motorway between
Badhoevedorp and
Holendrecht

Part of the Schiphol-Amsterdam-
Almere (SAA) road widening
scheme

Amstelveen



Agenda

1. Explanatory notes on the project
2. Review of work in summer 2021
3. How are we building the extra lanes (the by-pass)?
4. Monitoring and damage
5. *Buurbouw*
6. Municipality of Amstelveen
7. Where can you find information on the work?



Schiphol-Amsterdam-Almere road widening scheme

Aim:

- Improving accessibility and quality of life on the Schiphol-Amsterdam-Almere corridor

Result:

- Boost to economic developments and employment in the northern part of the Randstad area



Project animation



A9 Badhoevedorp - Holendrecht project (A9BAHO)

Part of the Schiphol-Amsterdam-Almere road widening scheme

- Reconstruction of 11 km of motorway: from 3 lanes in each direction to 4 lanes in each direction
- 14 km of noise barriers
- Creation of a 1.6 km cutting, made up of:
 - a 249-metre-long overpass at 'Oude Dorp'
 - a 249-metre-long overpass at 'Traverse/Stadshart'
 - an 85-metre-long overpass at 'Bovenlandpad/Meander'
- 15 motorway crossings, 6 of which are reserved for cyclists and pedestrians
- 6 'ecological' crossings
- A large solar power station delivering enough energy to make the motorway energy neutral



Outline overall planning schedule, Amstelveen section

2020 - 2022 road re-profiling, sand deposits for soil compaction, creation of temporary bridges and construction of temporary A9 by-pass

2022 - 2024 creation of cutting for northern carriageway of the A9 (traffic diverted via the A9 bypass)

2024 - 2026 creation of cutting for southern carriageway of the A9 (traffic diverted to the cutting for the northern carriageway)

2025 - 2026 creation of the 3 overpasses and the tree bridge

End of 2026 widening and deepening complete

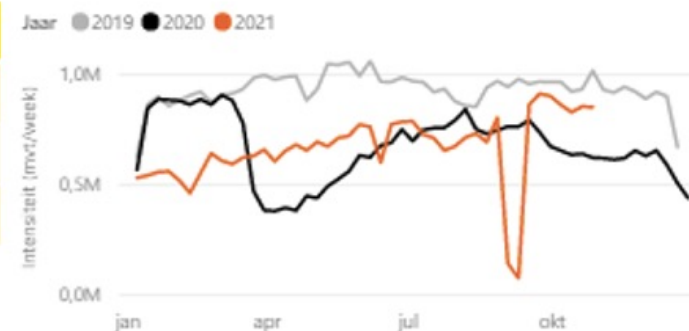
2027 configuration of overpasses and planting of new greenery by the municipality of



Traffic figures

A9 t.h.v. Amsterdamseweg (week 43)

Jaar	Etmaalintensiteiten
2019	100 %
2020	68 %
2021	92 %



A9 t.h.v. Amsterdamseweg (dinsdag 26 oktober)



2020 t.o.v. 2019

Ochtendspits

- 40 %

Avondspits

- 32 %



2021 t.o.v. 2019

Ochtendspits

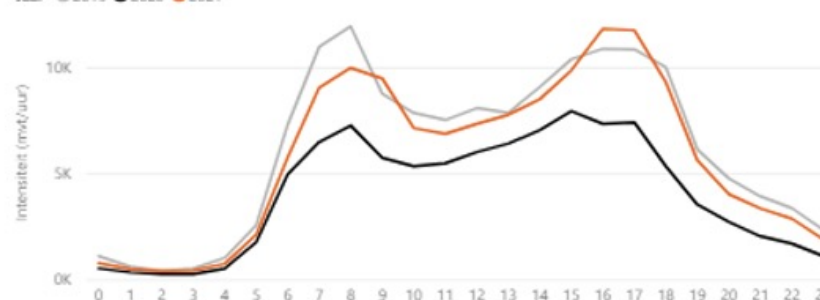
- 17 %

Avondspits

8 %

Intensiteitsverloop over de dag

Jaar ● 2019 ● 2020 ● 2021



Agenda

- 1.Explanatory notes on the project
- 2.Review of work in summer 2021**
- 3.How are we building the by-pass?
- 4.Monitoring and damage
- 5.Buurbouw*
- 6.Where can you find information?
- 7.Municipality of Amstelveen



SURROUNDING AREA OUDE DORP

Review of work in summer 2021:
Creation of temporary bridges at Amsterdamseweg and
Kazernepad



Creation of temporary bridges at Amsterdamseweg and Kazernepad

Bridge sections hoisted into place



Creation of temporary bridges at Amsterdamseweg and Kazernepad

Insertion of central support towers



Creation of temporary bridges at Amsterdamseweg and Kazernepad



SURROUNDING AREA KEIZER KARELWEG

Review of work in summer 2021:
Creation of DDI



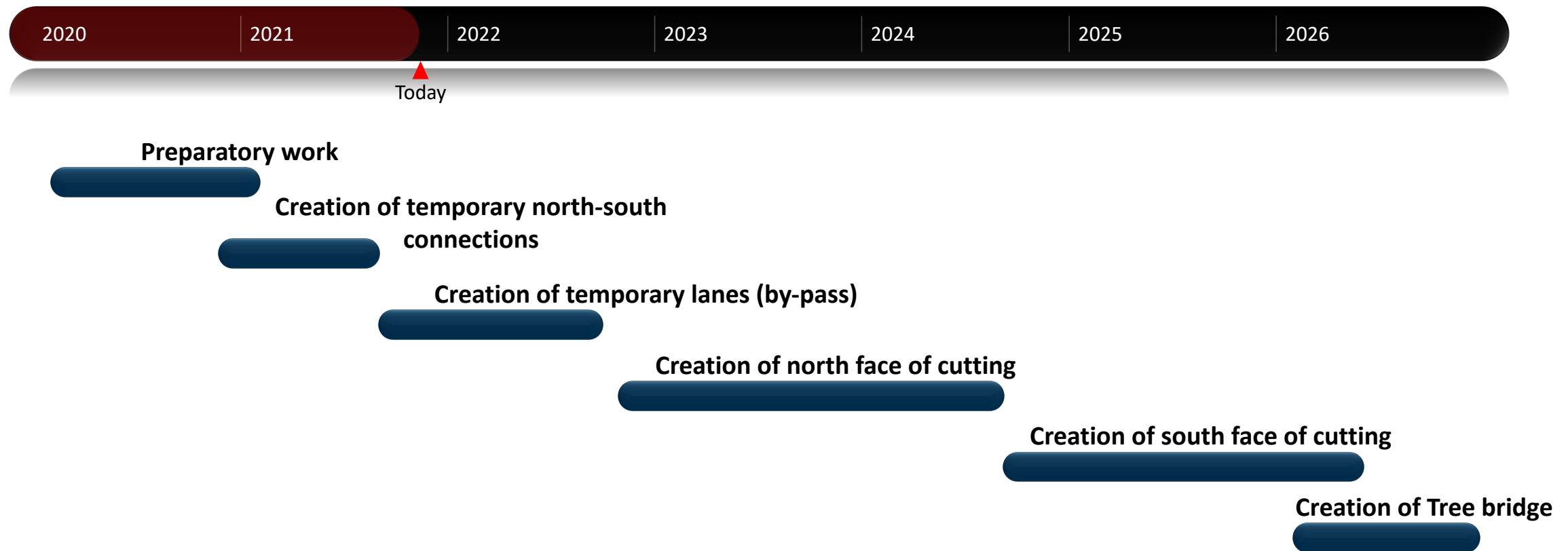
Keizer Karelweg reprofiled to form the DDI

Review of work in summer 2021



| Short film by Ron Tonkes

Window on future work



Agenda

- 1.Explanatory notes on the project
- 2.Review of work in summer 2021
- 3.How are we building the by-pass?**
- 4.Monitoring and damage
- 5.Buurbouw*
- 6.Municipality of Amstelveen
- 7.Where can you find information?



| Animation of by-pass

- Video: animation of by-pass

How are we building the by-pass?



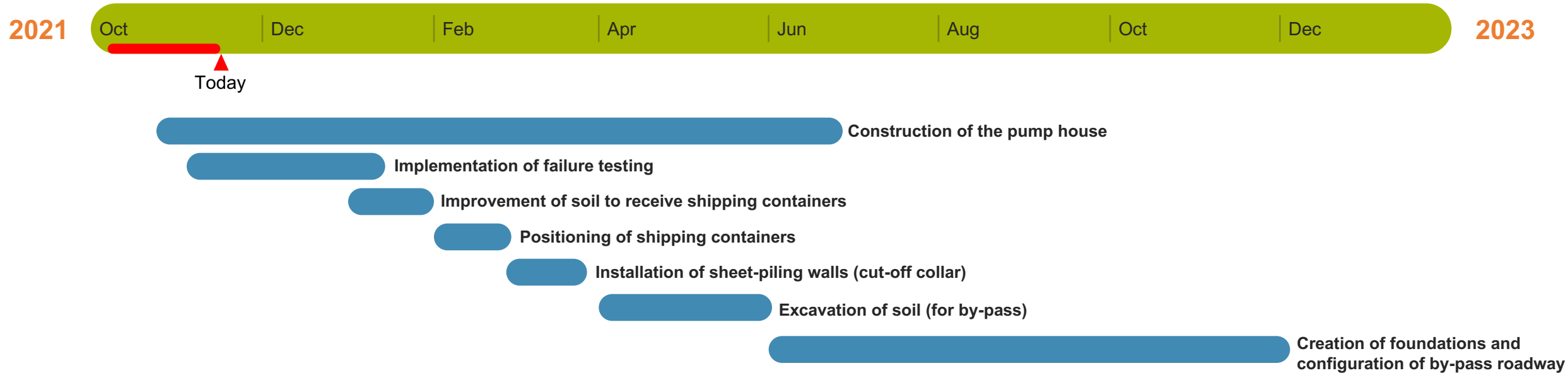
SURROUNDING AREA OUDE DORP

Work to create by-pass



How are we going to construct the by-pass?

Work in the vicinity of the *Oude dorp*



1. Construction of temporary pump house

Work in the vicinity of the Oude Dorp



Work started in October and will continue until July 2022

Work on sheet-piling wall will be completed this week.

Over the next few weeks and months foundation piles, the steelwork, installation of concrete cut-off collars and other concrete work.

Immediate surrounding area of the Oude Dorp will be notified of this in various 'update sessions'.

Short film on Pump House by Marco Vos

- Short film by Marco Vos (RWS technical department) on the Oude Dorp sheet-piling walls

2. Implementing failure tests

Work in the vicinity of the Oude dorp



To create the cutting we drive piles into the ground so that the base course remains in place and does not subside or float up.

In order to determine which piles we can best use we will be carrying out a test.

(Preparatory) work was started in November. The work will continue until mid-January 2022.

3. Positioning of shipping containers/removal of sound barriers.

Work in the vicinity of the Oude Dorp



The shipping containers are expected to be in position in February 2022.

Once the shipping containers are in position, the current noise barriers along the A9 will be removed.

4. Installation of sheet-piling walls (cut-off collar)

Work in the vicinity of the *Oude Dorp*



The sheet-piling wall will be installed as a damming wall for the polder land to the south of the A9

It is expected that work will take place in March 2022, once the shipping containers are in place

5. Excavation of soil for by-pass

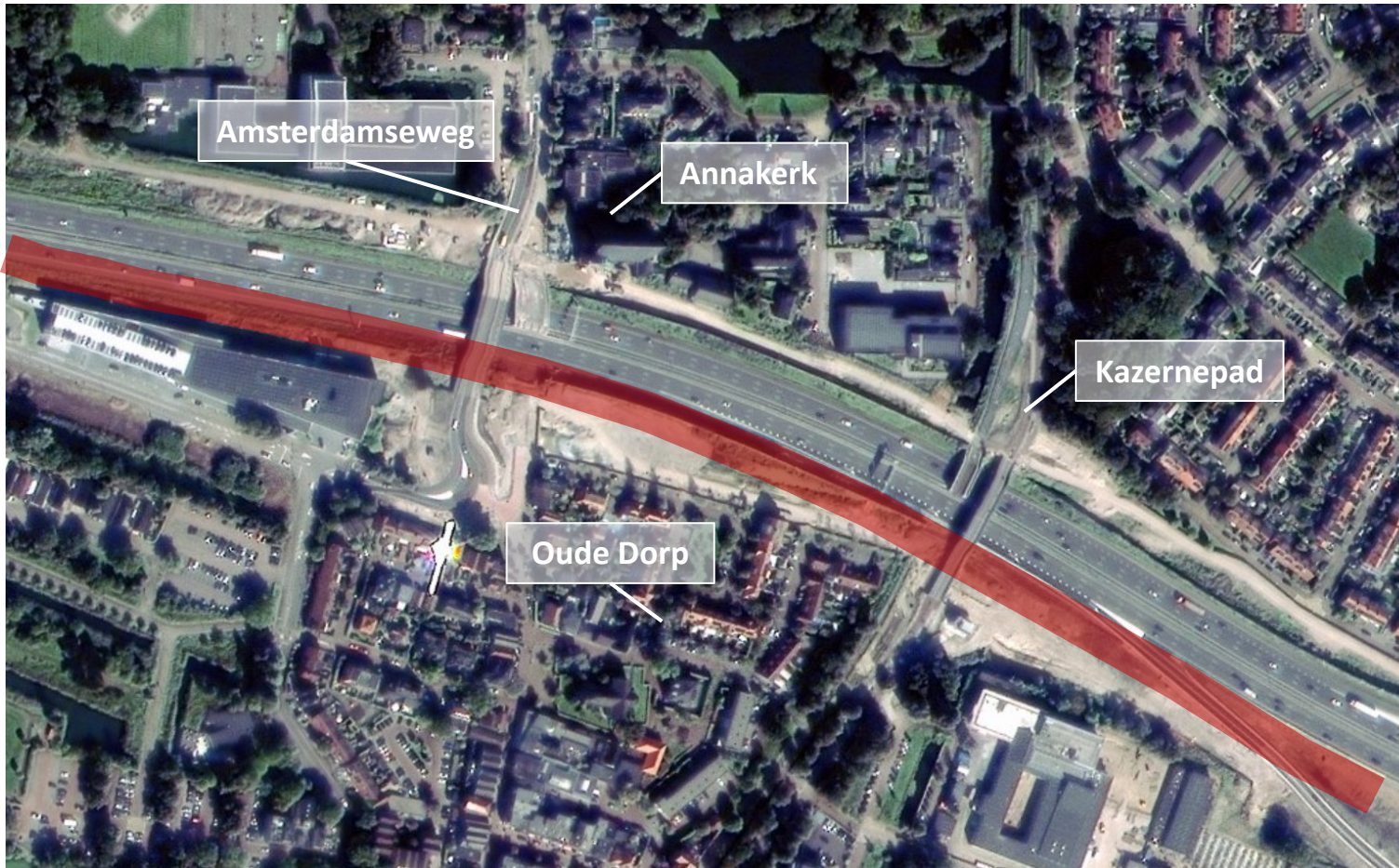
Work in the vicinity of the *Oude Dorp*



It is expected that work will take place between April and June 2022

6. Creation of foundations and configuration of by-pass

Work in the vicinity of the *Oude Dorp*



Laying of the base course so that the road has solid foundations

Asphalting and configuring the road

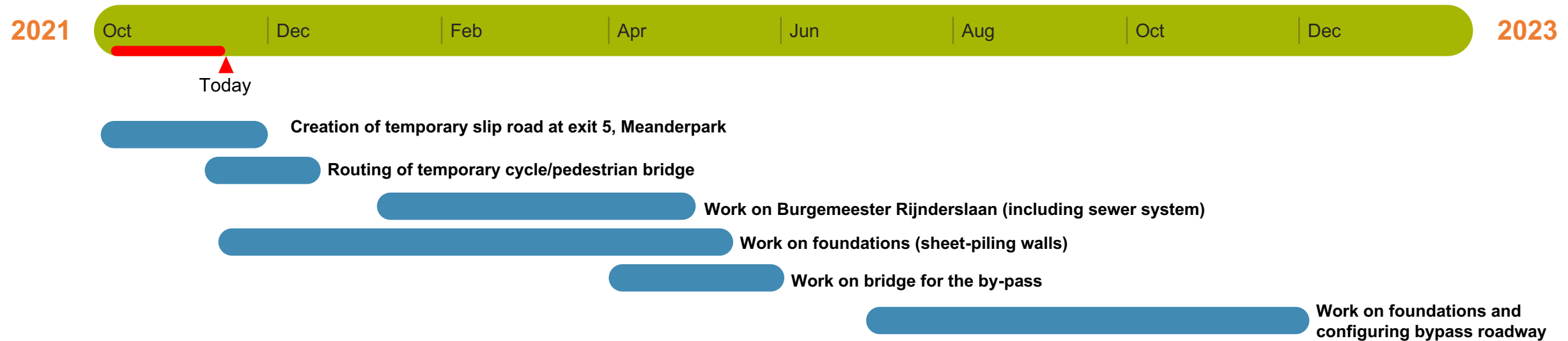
It is expected that work will take place between June and December 2022

KEIZER KARELWEG

Work to create by-pass



How are we going to put in the by-pass at Keizer Karelweg?



1. Creation of temporary slip road at exit 5, Meanderpark

Work on creation of bypass at Keizer Karelweg



Work on sheet-piling walls started in October

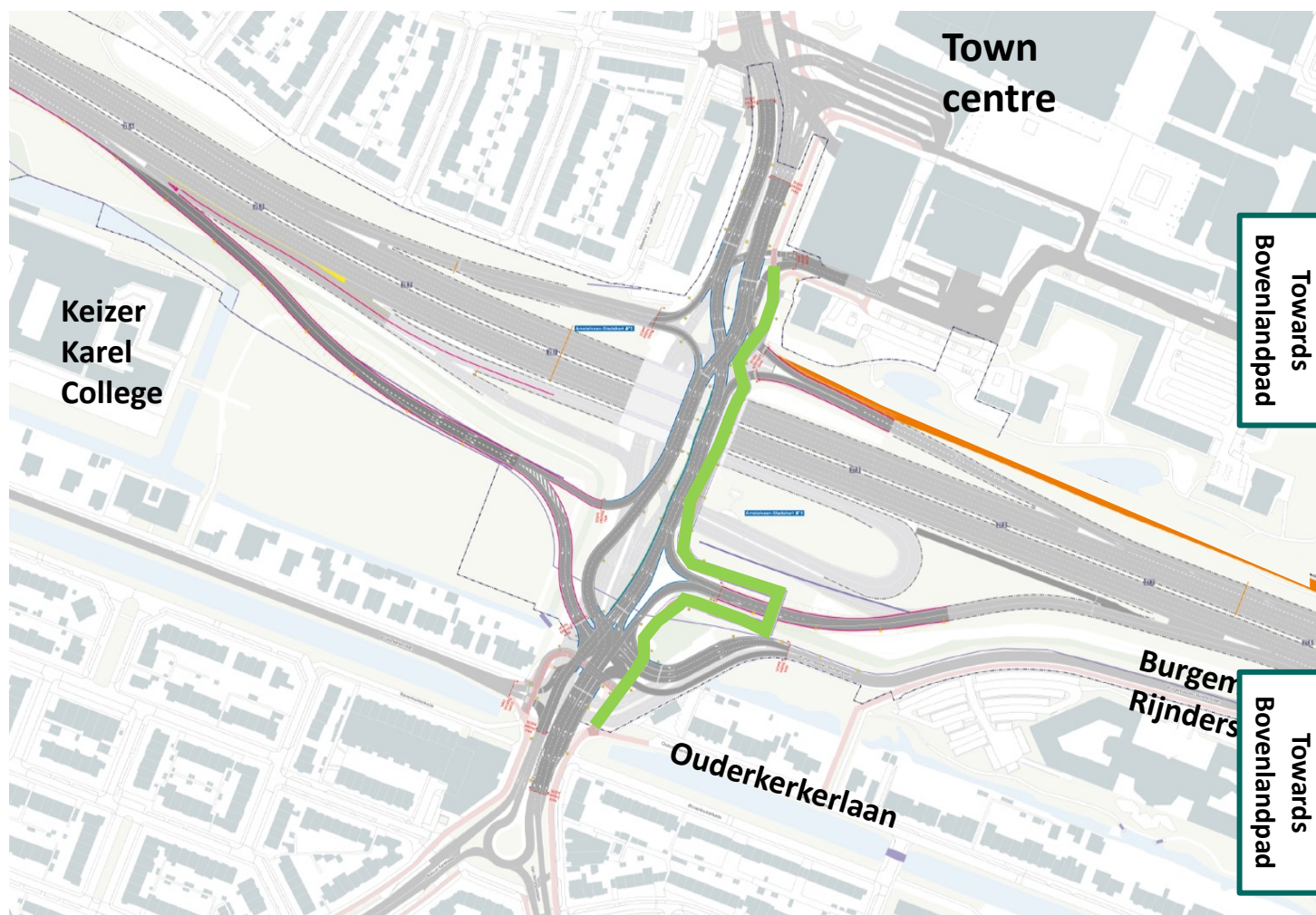
Work started at Keizer Karelweg and will proceed towards the Beneluxbaan

The work in Meanderpark will be completed at the end of November



2. Routing of temporary cycle/pedestrian bridge

Work on creation of bypass at Keizer Karelweg



The temporary cycle/pedestrian bridge will be installed overnight, between Friday 10 and Saturday 11 December.

The temporary pedestrian bridge will be removed overnight, between:

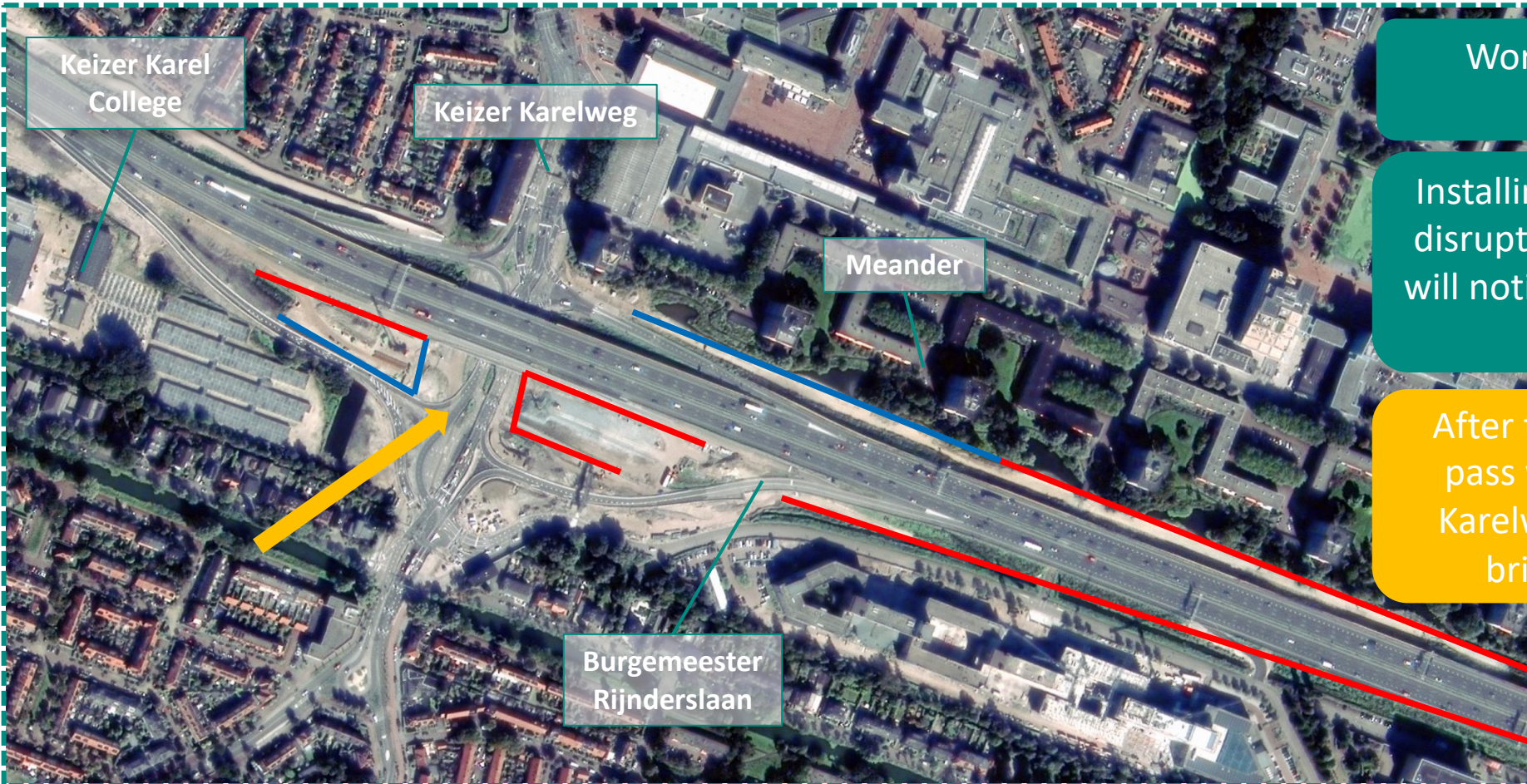
- Friday 17 and Saturday 18 December and
- Monday 20 and Tuesday 21 December.

The slip road onto the A9 at exit 5 will be closed for these road works overnight, from 11.00 p.m. - 07.00 a.m., opening on Tuesday 21 December at 05.00 a.m.

From Friday 17 December at 1.00 p.m., cyclists and pedestrians will be able to use the new bridge in both directions. Bovenlandpad closed.

3. Work on foundations for by-pass (bridge)

Work on creation of bypass at the Keizer Karelweg



Work will continue in phases, from November to June

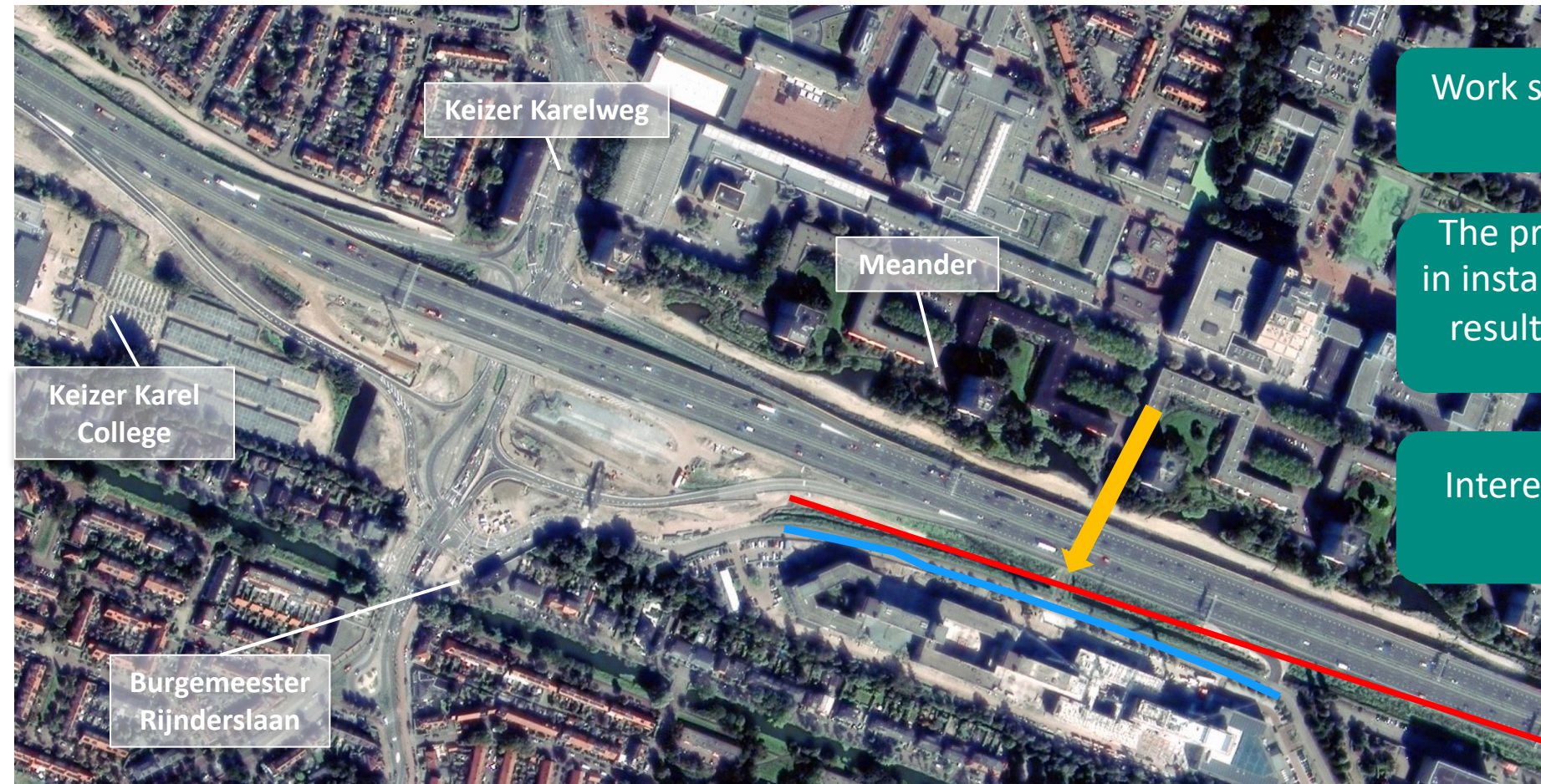
Installing the sheet-piling walls results in disruption from vibrations and noise; we will notify people in the area about this in good time.

After this period the bridge for the by-pass will also be built over the Keizer Karelweg (central support towers and bridge decks hoisted into place)

| Short film by Sjoerd

4. Work on Burgemeester Rijnderslaan

Work on creation of bypass at the Keizer Karelweg



Work starts in mid-January and continues until May 2022

The process of vibratory driving involved in installation of the sheet-piling walls may result in disruption from vibrations and noise

Interested parties will be notified of the traffic measures.

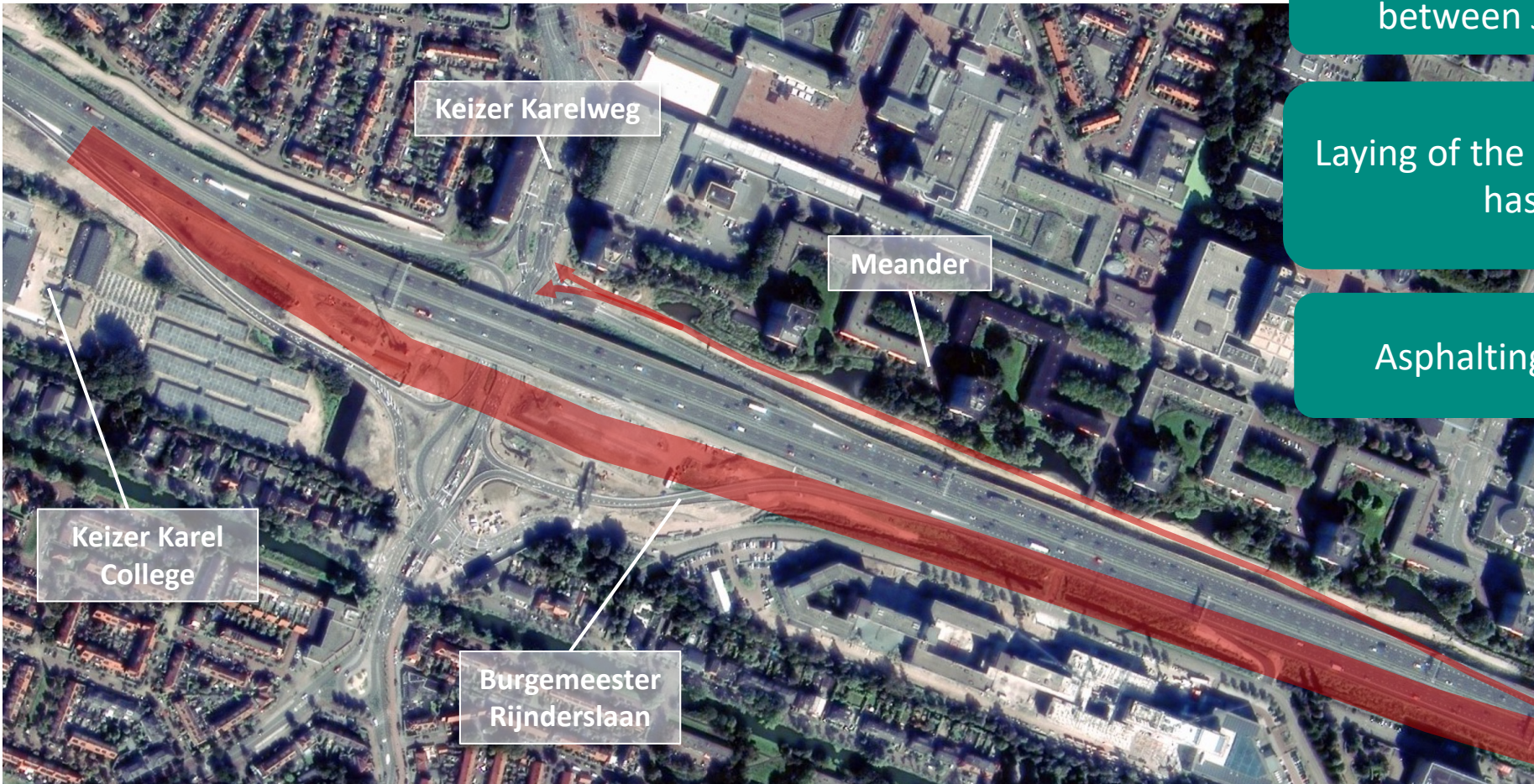
5. Creation of foundations and configuration of by-pass

Work on creation of bypass at the Keizer Karelweg

It is expected that work will take place between June and December 2022

Laying of the base course so that the road has solid foundations

Asphalting and configuring the road





Agenda

1. Explanatory notes on the project
2. Review of work in summer 2021
3. How are we going to build the extra lanes (the by-pass)?
4. Monitoring and damage
5. *Buurbouw*
6. Municipality of Amstelveen
7. Where can you find information on the work?



Monitoring and damage

- 2020: around 2,200 structural baseline surveys will (largely) be carried out in order to record the structural state in advance of the work
- From 2020 - 2026: work with the potential for disruption
 - Round-the-clock monitoring to reduce the risk of damage and prevent serious damage
 - 69 level indicators to take groundwater readings
 - Vibration meters to take readings of vibrations in the walls of representative buildings
 - Where readings exceed acceptable levels:
 - this must be reported immediately
 - the causes must be pinpointed
 - depending on the risk, decide whether to stop or continue, possibly using alternative methods



- The final structural surveys will be carried out in 2026/2027



What to do in the event of damage

- If you see damage that was not apparent before the start of the work, please fill in a damage form and send it to the address that can be found at www.bezoekerscentrum.rijkswaterstaat.nl
 - If you have cause for concern in the event of serious vibrations, for example, please phone 0800-8002. We will contact you to arrange a viewing.
- In the event of a report of damage, BouwVisie BV will assess the damage on site, making a decision on whether or not an emergency repair is necessary, estimating the costs of repair and considering whether there is a chance that the damage was caused by the work.
 - Damage caused by the project will be reimbursed as shown below:
 - In the event of damage $< € 5,000$ a general investigation into the existence of a causal link (92% of cases in A9 GDW project $< € 5,000$)
 - In the event of damage $> € 5,000$ standard investigation into existence of a causal link
 - Damage that was clearly not caused by work on the project will not be reimbursed.



***Buurbouw*: construction period offers opportunities for the surrounding area**

- Temporary platform during the construction period for the A9BAHO project, in which Rijkswaterstaat, VeenIX and the local municipality facilitate initiatives proposed by residents and the business community. In that way, *Buurbouw* can represent added value for residents and businesses during construction.
- Examples include:
 - kilometres of construction hoardings
 - construction site workers as potential customers
 - a lot of know-how, material, sand, rubble and machines
 - work experience placements, space for exhibitions (viewpoint)
 - digging up shrubs for your own use, etc...



If you come up with an idea, go to www.buurbouw.nl or send an e-mail to post@buurbouw.nl



Agenda

1. Explanatory notes on the project
2. Review of work in summer 2021
3. How are we going to build the extra lanes (the by-pass)?
4. Monitoring and damage
5. *Buurbouw*
6. Municipality of Amstelveen
7. Where can you find information on the work?

Agenda

1. Permit and dispensation
2. Plan formulation and configuration/landscaping of overpasses
3. Plan formulation and creation of 'green compensation'

Permit and dispensation

Every six months VeenIX will audit the work scheduled to be carried out. Where vibrations or disturbance due to noise are found to be too high:

- Use the best available technology instead
- Dispensation from the Amstelveen municipal executive
- Monitoring by the *Omgevingsdienst* (environmental service)
- Compensation for those in the surrounding area

Dispensation, Building Noise Assessment Framework for 1st half of 2022

1. Keizer Karelweg, *Oude Dorp, Amsterdamse Bos* removal of gantries overnight
2. Keizer Karelweg, carriageway grinding work at exit 5
3. Amstelveen Oost, moving exit 4 and earth work, overnight
4. Amstelveen Oost, Amsterdamse Bos, foundations for gantries, overnight



Oude Dorp

- Park with culture
- Cycle connections
- Creation of roundabout at junction between Burg. Colijnweg and Laan Nieuwer Amstel





Traverse

- Transport hub
- Tree bridge
- Built-up area



Mogelijke stedenbouwkundige invulling van de Gebiedsvisie (volgens Atelier wUrk)

-
- Mogelijke stedenbouwkundige invulling van de Gebiedsvisie (volgens Atelier wUrk)

Pathé Cinema

- 7 screen multiplex with seating for around 1,200 people
- Entrance hall on the *Stadsplein*
- Move access ramp from *Schouwburggarage*
- Start of construction 2025
- Construction scheduled to take 18 months







Tree bridge

- Coordinate design with A9 cutting (still in preparation)
- Position of tree bridge adjusted
- Gradient (expressed as percentage)
- Configuration of roundabout interchange and tree bridge in 2026



Bomenbrug

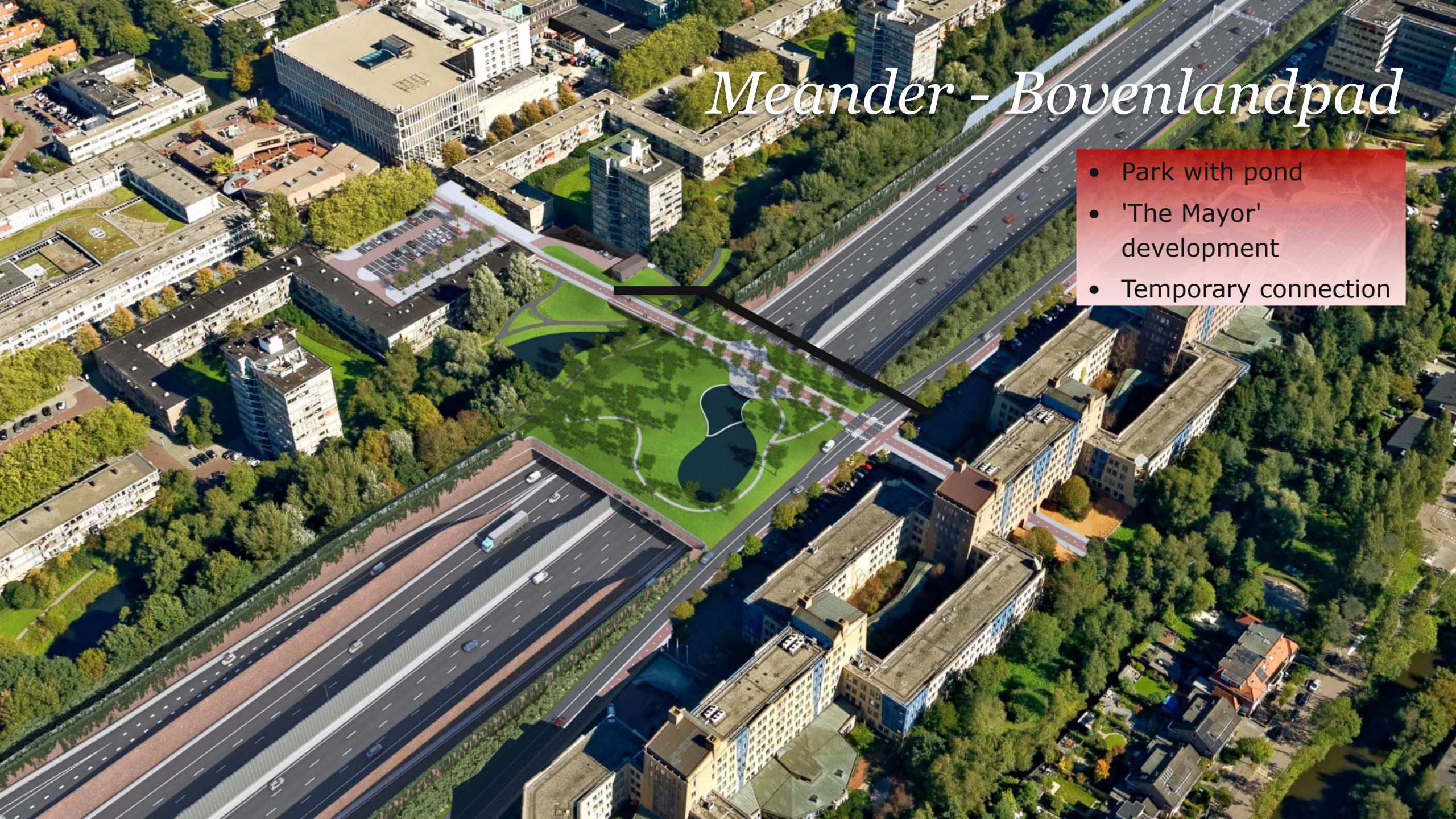


Oude entree vanaf A9



Meander - Bovenlandpad

- Park with pond
- 'The Mayor' development
- Temporary connection



An aerial photograph of a large, modern residential complex. The complex consists of several interconnected buildings with flat roofs, many of which are covered in green vegetation (green roofs) and solar panels. The buildings are surrounded by lush green trees and landscaping. In the background, a multi-lane highway runs horizontally across the frame. To the left, there's a smaller residential area with traditional houses. The overall scene depicts a modern, sustainable urban development integrated with nature.

The Mayor

Regeneration of green space

Compensation of green space by Amstelveen

2022: Master Plan for cohesion between green spaces
wide-ranging participation

2023: Development of sub plans
area-specific participation

2024: Tender procedure and start of project
van Hallweg, Meander, Parelvisserlaan

2025/26: Development of sub plans
area-specific participation

2027: Tender procedure and start of project
three overpasses

Compensation of green space by VeenIX

2026: Burgemeester Boersweg and on the south side of Bankras and KPMG



Agenda

1. Explanatory notes on the project
2. Review of work in summer 2021
3. How are we going to build the extra lanes (the by-pass)?
4. Monitoring and damage
5. *Buurbouw*
6. Municipality of Amstelveen
7. Where can you find information on the work?



Live map of areas affected by disruption

When is there going to be noise pollution and/or traffic disruption in my area?

www.bezoekerscentrum.rijkswaterstaat.nl



Online Bezoekerscentrum
Weguitbreiding Schiphol-Amsterdam-Almere (SAA)

Trajecten ^

- > A1 / A6 Diemen – Almere Havendreef
- > A9 Holendrecht – Diemen (Gaasperdammerweg)
- > A6 Almere Havendreef – Buiten-Oost
- > A9 Badhoevedorp – Holendrecht
- > A10-Oost / A1 Diemen

Update

Online informatiebijeenkomst A9 Badhoevedorp-Holendrecht: 10 en 18 november

Verbreiding en verdieping A9 BAHO

Verdiepte ligging A9 bij Amstelveen

Update

Hoe bouwen we de verdiepte ligging in Amstelveen terwijl de A9 openblijft?

Verdiepte ligging A9 bij Amstelveen

Online Bezoekerscentrum
Weguitbreiding Schiphol-Amsterdam-Almere (SAA)

Trajecten v

A9 Badhoevedorp – Holendrecht

A9 Badhoevedorp – Holendrecht

Rijkswaterstaat verbreedt de A9 tussen de knooppunten Badhoevedorp en Holendrecht naar vier rijstroken per rijrichting en legt een wisselbaan aan. Door de extra rijstroken verbetert de doorstroming en daarmee de bereikbaarheid van de noordelijke Randstad. Ook wordt de leefbaarheid in de omgeving vergroot.

[Bekijk de toekomstige situatie](#)

[Bekijk hier de actuele hinderkaart](#)

[Bekijk hier alle informatie over geluidhinder](#)

[Lees meer >](#)

Werk op dit traject

- In de planning: 11
- In uitvoering: 4
- Klaar: 0



Amstelveen InZicht experience centre

Pay a visit to Amstelveen InZicht, Stadsplein 103 in Amstelveen, above the library and Venstra book shop.

Amstelveen InZicht offers information on the work and the future situation in relation to the A9. InZicht is open from 1.00 p.m. - 5.00 p.m. on Wednesdays, Thursdays and Fridays. Rijkswaterstaat and VeenIX personnel will be on hand and are happy to answer any questions you may have. During the InZicht opening hours you can also visit the viewpoint at the Kazernepad.



Rijkswat





Interested in the work? Don't forget to apply for the guided bicycle tour

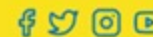
- Each Wednesday from 1.30 p.m. - 4.00 p.m., even in winter
- Assemble at Amstelveen InZicht, Stadsplein 103 in Amstelveen, above the library
- Bring your own bike



Online Bezoekerscentrum

Weguitbreiding Schiphol-Amsterdam-Almere (SAA)

Trajecten ▾



Update

Online informatiebijeenkomst A9 Badhoevedorp-Holendrecht: 10 en 18 november

▸ [Verbreiding en verdieping A9 BAHO](#)

Update

'Bakken verdiepte ligging li op een bal die uit het water boven wil'

▸ [Verdiepte ligging A9 bij Amstelveen](#)

Update

Hoe bouwen we de verdiepte ligging in Amstelveen terwijl A9 openblijft?

▸ [Verdiepte ligging A9 bij Amstelveen](#)



Fietsrondleidingen langs werk A9 Amstelveen



Rijl



Where can you find information?

- You can find more information at www.bezoekerscentrum.rijkswaterstaat.nl
- You can apply for the monthly A9BAHO digital newsletter. This has all the latest developments on how work is progressing on the A9BAHO project.
- Follow us on social media:  RWS_SAA  RWSSAA  Bezoekerscentrum SAA (SAA Visitor centre)
- And you can call the RWS national information line on 0800-8002, or contact us by e-mail at: A9badhoevedorp-holendrecht@rws.nl or 08008002@RWS.nl
- Come to the (on-line) information meetings or take part in the guided tours on site